

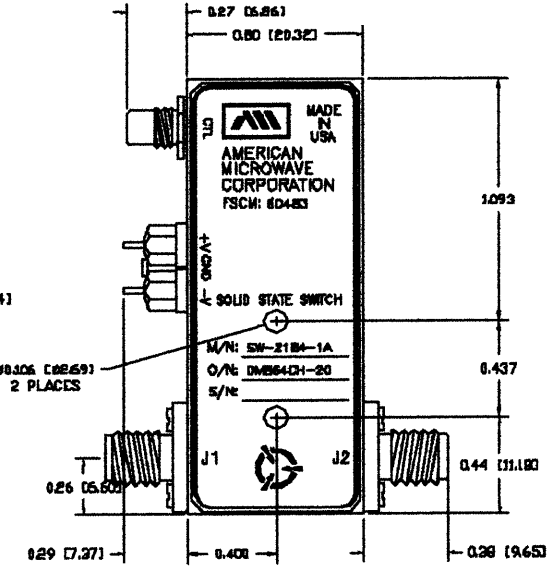
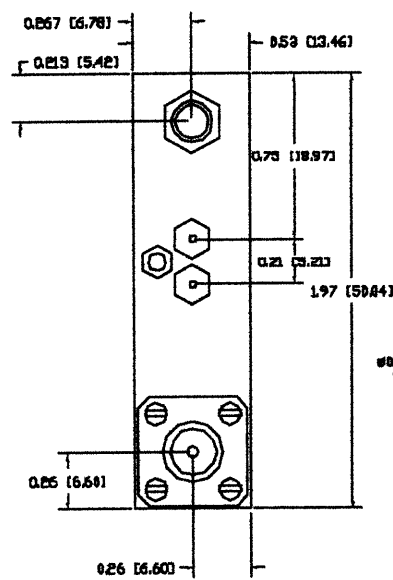
DESCRIPTION:

AMC MODEL SW-2184-1A OPTION DM864CH-20 IS A HIGH SPEED, REFLECTIVE, SINGLE POLE SINGLE THROW SWITCH MODULE WITH LOW INSERTION LOSS, AND WITH INTEGRAL TTL DRIVER, DESIGNED FOR 8 GHz TO 18 GHz OPERATION.

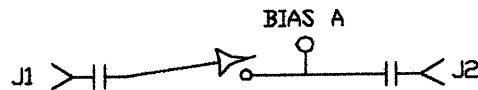
SPECIFICATIONS:

- FREQUENCY: 8 GHz TO 18 GHz
- INSERTION LOSS: 8.0-12.4 GHz 1.8 dB MAX.
12.4-18.0 GHz 2.8 dB MAX.
- ISOLATION: -80 dB MINIMUM
- VSWR: 8.0 GHz TO 12.4 GHz: 2.0:1
12.4 GHz TO 18.0 GHz: 2.2:1
- RISE/FALL TIME: 10 nS
(10% RF TO 90% RF)
(90% RF TO 10% RF)
- DELAY ON/OFF 30 nS MAXIMUM, 15 nS TYPICAL
(50% TTL TO 90% RF)
(50% TTL TO 10% RF)
- REPETITION RATE 20 MHz
- POWER HANDLING CAPABILITY: 1 WATT CW OR PEAK SURVIVAL POWER
2 WATT AVERAGE, 75 WATT PEAK
(1 USEC MAX PULSE WIDTH)
- POWER SUPPLY: +15V @ 70 mA MAXIMUM
-15V @ 20 mA MAXIMUM
- CONTROL INPUT IMPEDANCE: TTL, TWO-UNIT LOAD. (A UNIT LOAD IS 1.6mA CURRENT SINK.)
- CONTROL LOGIC: LOGIC "0" (-0.3V TO +0.7V) FOR SWITCH OFF
AND LOGIC "1" (+2.5V TO +5.0V) FOR SWITCH ON
- CONTROL VOLTAGE CONNECTOR: SMC MALE
- SIZE: 1.97" (L) x 0.80" (W) x 0.53" (H)
- WEIGHT: 1.5 OUNCE TYPICAL

REV. NO.		DESCRIPTION	DATE	APPROVED
-	-	ORIGINAL JOB# 909167E	12/19/88	



BLOCK DIAGRAM



M/N = MANUFACTURER PART NUMBER
Q/N = OPTION NUMBER
S/N = SERIAL NUMBER

CONFIDENTIAL AND PROPRIETARY

ENVIRONMENTAL RATINGS

- TEMPERATURE: -85°C TO +85°C (OPERATING)
-65°C TO +125°C (STORAGE)
- HUMIDITY: MIL-STD-202F, METHOD 103B COND. B
- SHOCK: MIL-STD-202F, METHOD 213B COND. B
- VIBRATION: MIL-STD-202F, METHOD 204D COND. B
- ALTITUDE: MIL-STD-202F, METHOD 105C COND. B
- TEMPERATURE CYCLE: MIL-STD-202F, METHOD 107D COND. A

ALL DIMENSIONS ARE IN INCHES
TOLERANCES:
X.XX ±0.020
X.XXX ±0.010

NOTE THE ABOVE SPECIFICATIONS ARE SUBJECT TO CHANGE OR REVISION

APPROVALS		DATE		TITLE	
DRAWN <i>WAC</i>		12/19/88		PRODUCT FEATURE SW-2184-1A OPTION DM864CH-20	
CHECKED				REV. -	
ISSUED				SCALE N/S	
		SIZE FROM NO. A 60483		DWG NO. 100-5205	
				SHEET 1 OF 3	



AMERICAN MICROWAVE CORPORATION
FREDERICK, MARYLAND